

*Team*

# **DAKOTA**<sup>TM</sup>

**Golf Course • Sports Field • Horticulture • Landscaping**



## **DAKOTA Growing Systems**

Teaming all of **DAKOTA's** resources  
for guaranteed success.

# Why a DAKOTA Growing System...

With three decades of DAKOTA Peat being the best in science and results, DAKOTA has established a superior specification for sand based rootzones.

Too often, the organic is compromised for the quality of the sand or misinformation is given on the differences between organic components. New, high-priced systems promise a lot, but deliver little. Peat is not just peat, organic is not just organic, new is not always better.

With DAKOTA's position in the industry we are in direct contact with the real people who take care of their facilities. They have given us great insight in to what's working and what isn't. To this end, we have not only established a specification for a sand based rootzone, but a quality care program to ensure continued success.

Don't be fooled, there is only one DAKOTA Growing System.

## Guarantee Success!

# DAKOTA



# DAKOTA™

## Growing System

### PREMIUM

#### 90/10 DAKOTA

- 90% DAKOTA approved sand
- 10% genuine DAKOTA Peat
- Mixes approved by DAKOTA Analytical

*Over three decades  
with 100% success!*

### ULTIMATE

#### 85/15 DAKOTA

- 85% DAKOTA approved sand
- 15% genuine DAKOTA Peat
- Mixes approved by DAKOTA Analytical

*The ULTIMATE balanced rootzone  
for the highest degree of protection  
from outside forces*

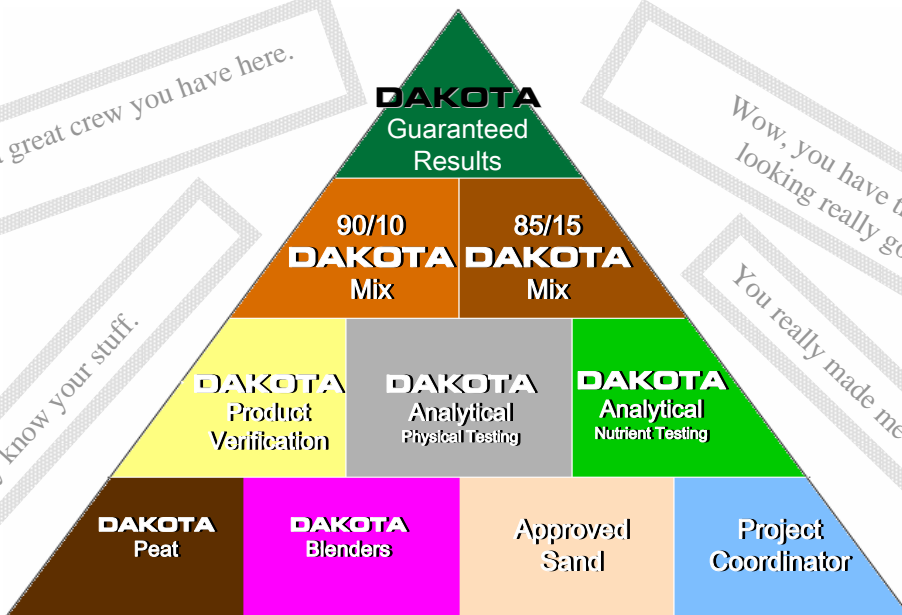
What a spectacular course!

Man, what a great crew you have here.

Wow, you have this thing  
looking really good!

You must really know your stuff.

You really made me look good.



## DAKOTA Growing System Process

Nothing has been proven to work better.

# Elements of **DAKOTA** Growing System

**DAKOTA** Analytical, Inc..... Your truly independent soil testing lab



DAKOTA Analytical understands each project and situation lends itself to a different outlook on the results. We report what is asked for as simply as possible. If a client wishes our advice, Dakota's experienced staff will discuss what the tests indicate for the situation. DAKOTA Analytical will give you simple results and the professional answers and advice when needed.

**Prompt**

**Accurate**

**Confidential**

- Rootzone material analysis
- Drainage gravel analysis
- Bunker sand assessment
- A2LA Accredited  
(American Association for Laboratory Accreditation)

- Nutrient Analysis
- NEW!** Product Verification Testing
- Use Stringent Confidentiality Guidelines
- Member USGA PUG Committee  
(Putting Green Materials Testing Technical Advisory Committee)

**DAKOTA** PVT Testing .....  
Patent Pending

**Did you get what you paid for?**



Our Product Verification Testing (PVT) ensures you are getting the amendment you paid for. Whether it is humus, sphagnum, reed sedge, Dakota Peat, or calcined clay. Level the playing field by specifying PVT.

**Test Your First Load Not Your Last!**


- Proven Forensic Technology
- Highest Level of Quality Assurance Available

- When PVT is specified, it ensures a level playing field
- Protects Integrity and Reputation of all involved

**Limit Your Liability**

# Elements of **DAKOTA** Growing Systems

Genuine **DAKOTA** Peat... The highest quality peat in the world.



The DAKOTA Peat story began thousands of years ago in what is now known as peat fields left behind from glacial Lake Agassiz. The conditions necessary to create the best peat anywhere took thousands of years. The amazing qualities of DAKOTA Peat aren't a result of human engineering, just Dakota's great fortune of having the best peat in North America.

## Genuine **DAKOTA** Peat is essential to the system

- Builds proper soil structure better than other amendments
- 100% natural with neutral pH of 6-7
- Reduces incidents of pathogenic diseases
- Growth enhancer, stimulates germination and root growth
- Reduces thatch by creating excellent environment for micro-organisms
- Resists layering and soil compaction
- Highly stable and resists decomposition
- Re-wets easily without wetting agents
- Reduces the need for other soil amendments
- Enables balanced water and nutrient practices

**DAKOTA** Blending Network... Most homogenous blend in the industry.



DAKOTA Blenders specializes in portable custom blending services available directly or through the Dakota distribution network. The Dakota 2250 blender is the most accurate, thorough, and efficient high volume blender in the industry. Dakota's commitment to quality and excellence will be seen when you experience the services of Dakota Blenders.

## The **DAKOTA** Blender Advantage

- The most homogenous blend in the industry
- Patented five stage blending process
- Total quality assurance program
- MSHA trained personnel
- Incredible consistency of blend
- Large volume production portability
- Blending units built and maintained by DAKOTA
- Third hopper blending capabilities with incredible accuracy

**Guarantee Your Bottom Line**

# DAKOTA Quality Care Program

## Keep your **DAKOTA** Growing System for the long-term

The **DAKOTA** Growing System doesn't end at the construction phase. The reasons you built with Dakota Growing System are the same reasons you need to continue using the Dakota Quality Care Program.

The most common topdressing practice (straight sand) can be highly detrimental to your DAKOTA Growing System. It will lead to a dilution of the ideal rootzone that you started with, giving you a droughty, disease-prone environment. Much higher use of chemicals, water, and nutrient additives will be needed to get desired results. This can be costly to a person's livelihood and reputation.


Using other organic or inorganic amendments can also lead to deterioration of the properties of your original Dakota Growing System.

**DAKOTA's** Quality Care Program will help maintain the balanced rootzone you started out with. This system includes:

- Topdressing with same DAKOTA approved mix used during construction
- As needed Dakota Analytical testing, including PVT, of topdressing mix will be done to assure quality
- Dakota Analytical Nutrient and Physical Analysis of the rootzone will be done as needed
- The program will be customized to the needs of each individual customer

These simple steps will ensure the proper soil structure and balance for the continued success of your Dakota Growing System.

## **DAKOTA's** Regeneration Plan.... There is hope for those who don't have the **DAKOTA** Growing System



DAKOTA will customize a program to fit your specific situation. This plan will help ensure your success for the long term.

Using the DAKOTA Quality Care Program as a regeneration plan, you can, over time, get the benefits of the Dakota Growing System. Issues such as thatch accumulation, dry spot, high use of water, and chemical and nutrient leaching can be greatly reduced.

## Reduce Your Workload

# Get Real Results.....

*"We had from 10 to 12 inches of root mass in only 90 days... I've done four courses and never before had one grow in so you could actually play golf on it in just four months."*  
*Brian Eldridge, Supt. Honey Creek GC*

*"It was one of the best grow-ins that I've ever seen."* *Art Schaupeter, Architect*

*"Peat is definitely an advantage in terms of grow-in of the grasses on greens and tee surfaces. I won't consider any other product than Dakota Peat."* *Bradford Benz, Architect*

*"I've never seen a blending machine that mixes so thoroughly and accurately. The Dakota Team puts out a homogenous mix every time."*  
*Scott Wright, Wright Brothers Sand*

*"We were very pleased with how Dakota peat has performed and also with how the company performed, how they met delivery schedules and were there as a resource."* *Dale Getz*

*"Using Dakota Peat has been worth every penny that we put into it. I'll put our greens up against anybody's."*  
*Neal Dukart, Club Pres Elgin GC*

*"...I would do it the same way again...absolutely the same way. Our greens will match up with the best in the region."* *Brian Lewis, Supt. Brookwoods GC*

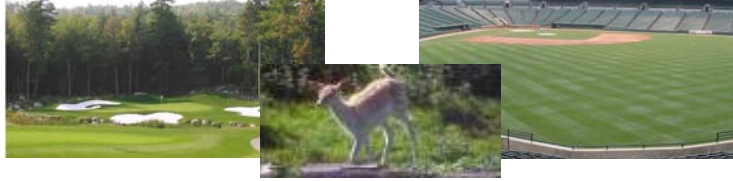
**Enhance Your Reputation**

# DAKOTA ESS ..... Environmental Stewardship Solutions

**DAKOTA** Environmental Stewardship Solutions (ESS) are principles to achieve generational environmental health and economic profitability while maintaining turf to the highest standards.

DAKOTA Growing Systems have proven to be solutions to attain these goals. The elements involved in this stewardship process are: water, energy, soil management, and efficient use of inputs.

DAKOTA Environmental Stewardship Solutions are the product of three decades of research and success in the turf industry.



## GIVING BACK TO THE ENVIRONMENT

Dakota Peat strives to better the environment by returning a great portion of the land they mine for peat products to an improved game refuge; planned waterways, nesting areas, and wooded areas for moose, deer, bear, ducks and geese, etc. All projects are privately funded but are in full cooperation with the DNR.



**DAKOTA** Growing System includes all elements of Team DAKOTA.

- **DAKOTA** Peat
- **DAKOTA** Equipment
- **DAKOTA** Blenders
- **DAKOTA** Horticulture
- **DAKOTA** Analytical
- **DAKOTA** Tree Transplanter



See Your Local Distributor Today!

Team  
**DAKOTA**  
[www.dakotapeat.com](http://www.dakotapeat.com)

P. O. Box 14088  
Grand Forks, ND 58208  
(800) 424-3443  
(701) 746-4300



© Copyright 2006

